



Flood Annex

Coordinating Agency:	Clermont County Emergency Management Agency (EMA)
Primary Agency:	Local Fire and EMS Departments
Support Agencies:	American Red Cross Clermont County Building Department Clermont County Office of Public Information Clermont County Engineers Office Clermont County Public Health (PH) Clermont County Sheriff's Office Local Law Enforcement Agencies Local Road and Service Departments Ohio Department of Transportation

I. Purpose, Situation, and Assumptions

Historically, flooding is the most costly hazard for Clermont County, in terms of dollars associated, and the second most frequent hazard. Flooding is generally the result of excessive precipitation and can be classified under two categories: flash floods, the product of heavy localized precipitation in a short time period over a given location; and riverine floods, caused by precipitation over a longer period causing larger river systems, such as the Ohio or Little Miami River, to exceed their banks.

A. Purpose

The purpose of this Annex is to establish guidelines for taking emergency action in response to flooding.

B. Situation

Clermont County is subject to flooding along the banks of the Ohio River, which could affect the following jurisdictions resulting in loss of life and property. Tab A. provides maps of flood prone areas.

Ohio River Flooding can lead to backwater flooding of:

- Nine Mile Creek
- Ten Mile Creek
- Twelve Mile Creek
- Big Indian Creek
- Bullskin Creek

Townships (East to West)	Villages (East to West)
Franklin Township	Village of Chilo
Washington Township	Village of Moscow Village of Neville
Monroe Township	
Ohio Township	Village of New Richmond
Pierce Township	

Clermont County is subject to flooding along the following rivers, creeks and dams that would affect the following jurisdictions.

- Cloverlick Creek
- East Fork Little Miami River
- W.H. Harsha Lake
- Stonelick Lake
- Stonelick Creek
- O'Bannon Creek
- Little Miami River

Townships (East to West)	Villages (East to West)
Tate Township	
Williamsburg Township	Village of Williamsburg
Jackson Township	
Wayne Township	
Batavia Township	Village of Batavia
Stonelick Township	
Goshen Township	
Union Township	
Miami Township	City of Loveland City of Milford

Tab B. provides a list of historical road closures and property impacts.

C. Assumptions

Flooding can occur at any time of the year. Floods can develop slowly or quickly, depending on several factors. Winter or spring rains, coupled with melting snows, can fill river basins quickly. Torrential rains from decaying hurricanes or other tropical systems can also produce flooding. The excess water from snowmelt, rainfall, or storm surge accumulates and overflows onto the banks and adjacent floodplains.

II. Concept of Operations

A. Incident Command

The Fire/EMS Department where the event is occurring will establish Incident Command/Unified Command (IC/UC) depending on the scope and severity of the incident and the number of jurisdictions affected.

- If the local Fire Department is unable to fulfill the duties of lead agency, a mutual aid Fire/EMS Department or local law enforcement will become the lead agency. An Incident Command Post (ICP) will be identified.
- If the event affects multiple jurisdictions, an area command may be established. A Senior Fire/EMS Officer will be designated the Area Commander and establish an Area Command Post.

The Initial Priorities will be:

- Life Safety (responders, at-risk populations, and the general public)
- Incident Stabilization (protection of response resources, evacuation of affected areas, and coordination of utility shut-offs to reduce fire danger)
- Property Conservation (Public facilities and critical infrastructure, environmental concerns, publicly owned property and resources).

B. Jurisdictional Coordination

- The local municipality will follow their jurisdictional emergency response procedures.
- The local municipality may sign a Declaration of Emergency (also referred to as Disaster Proclamation).
- If the event exceeds the local capability, the local municipality will coordinate with EMA to request additional resources.

C. County Level Coordination

- The EMA may provide resource support to the ICP or the Area Command Post (ACP) at the request of the affected municipalities. Additional County resources may be requested to support flood operations and should report to the ICP/ACP.
- As the event escalates, the IC/UC, in consultation with the EMA, may request the activation of the Emergency Operation Center (EOC). The decision to activate the EOC will be made by the Board of County Commissioners. Per Resolution #182-01, in their absence, the County Administrator may make this decision. If the situation does not warrant the EOC, the information will be coordinated through the EMA.
- Depending upon the incident, varieties or combination of teams and/or agencies may be needed in the EOC and at sites around the county to augment and support IC/UC.
- The EMA/EOC will coordinate with regional, state and federal partners to request additional resources.
- The EMA/EOC will provide mass care support per the Mass Care Annex (ESF #6) (e.g. shelter, feeding, respite, critical incident stress debrief, and emergency assistance supplies.)

D. State Coordination

- State disaster assistance, when provided, will supplement, local, County and regional response resources.

- The Ohio EMA maintains a regional field Office that coordinates with EMA and local partners to ensure seamless support to the County and local jurisdictions.
- The Ohio EMA maintains a 24-hour steady-state Watch Office to monitor potential disasters and assist local communities. County situation reports, resource requests, and emergency proclamations should be submitted to the Watch Office and Regional Field Office Staff.
- Ohio EMA maintains WebEOC, an information management tool that can be used for incident documentation, resource requests, and coordination with local, regional, and state partners.
- If incident thresholds are met, the State EOC may be activated to coordinate State resources.

E. Federal Coordination

- The National Weather Service maintains a field office in Wilmington, Ohio that is staffed 24 hours a day with meteorologists and hydrologists. The NWS provides updated weather and river forecasts. They will also complete a damage assessment following the incident to determine scope and severity of the incident.
- Depending on the severity of the incident and the level of national significance, the Federal Emergency Management Agency (FEMA) may activate their EOC to monitor the incident, support the State(s) with resource requests and recovery operations.

III. Assignment of Responsibilities

A. Local Fire/EMS Department

- Establish and manage Incident Command Post (ICP) or Area Command Post (ACP)
- Perform an immediate rapid survey of affected area and report findings to the ICP and EMA/EOC.
- Recommend the degree of mobilization needed.
- Send representative to the EOC, if activated.
- Recall off-duty personnel as needed.
- Direct, conduct, and control search, rescue, firefighting, and EMS activities.
- Secure support from surrounding fire and EMS departments.
- Provide the EMA/EOC with regular updates of the situation.
- In coordination with the local law enforcement, recommend any evacuations, if needed.
- Establish areas for triage, treatment, and transportation of injured.
- Coordinate support activities such as utility damage assessment, structural safety assessment, etc.
- Coordinate the shut-off of any electric, natural gas, propane, and/or water lines that are ruptured and posing immediate hazards. Coordinate with local fuel stations to secure fuel tanks.
- Direct and conduct any property conservation efforts.

B. County Sheriff's Office and Local Law Enforcement Agencies

- Send representative to the ICP and EOC, if activated.
- Recall off-duty law enforcement personnel as needed.
- Direct and conduct law enforcement activities needed to maintain law and order.
- Secure support from surrounding law enforcement agencies, if needed.
- Establish perimeter control.
- Establish and control traffic movement around affected area.
- In coordination with the fire department, recommend and implement evacuations, if needed.
- Provide ICP and EMA/EOC with regular updates of the situation.
- Provide support activities such as security for ICP, EOC and shelters, if needed
- Maintain order at evacuation centers or shelters.

C. County Emergency Management Agency (EMA) / Emergency Operation Center (EOC)

- Support local communities affected by sending a representative(s) to the ICP.
- If the incident exceeds thresholds, the Incident Commander may request EOC activation. The County EMA will follow the EOC activation procedures outlined in the EOP and notify the appropriate support agencies listed in this plan, based on the needs of the event.
- Support IC/UC by providing countywide resource coordination, if necessary.
- Support public information dispersal and rumor control efforts throughout the emergency.
- Provide information updates to County and State Partners
- Request State resource assistance, if necessary.
- Coordinate County-wide Priorities
 - ☐ Support Continuity of Government
 - ☐ Damage Assessment – gather information from all partners on property impacts
 - ☐ Debris Management
 - ☐ Government Coordination
 - ☐ Information Management
 - ☐ Mass Care (sheltering, feeding, emergency assistance, etc. - *The American Red Cross is the lead agency for operating shelters.*
 - ☐ Volunteer and Donations Management
 - ☐ Recovery Assistance to impacted residents
 - ☐ Documentation (Tracking Expenses)
 - ☐ Transition to Long Term Recovery Committee

D. County Engineer, Municipal Road/Service Depts., Ohio Dept. of Transportation (ODOT)

- Send representative to the ICP and the EOC (if activated)
- Recall off-duty personnel as needed
- Provide and maintain traffic control devices such as appropriate drums, barricades, signs, etc.
- Clear roadways to provide and maintain access
- Provide support activities as needed

E. County Building Department

- Send a representative to ICP and the EOC (if activated)
- Conduct life safety inspections
- Coordinate with local Fire Department and Utility Providers for utility shut-offs; Coordinate for the restoration of services after the water recedes
- Provide the EMA/EOC with regular updates of the situation.

F. American Red Cross

- Provide a representative to the ICP or EOC (if activated)
- Provide shelter operations, according to Mass Care, Housing, and Human Services Annex (ESF #6).
- Provide resources for mass feeding, emergency assistance, and mental health support.

IV. Administration

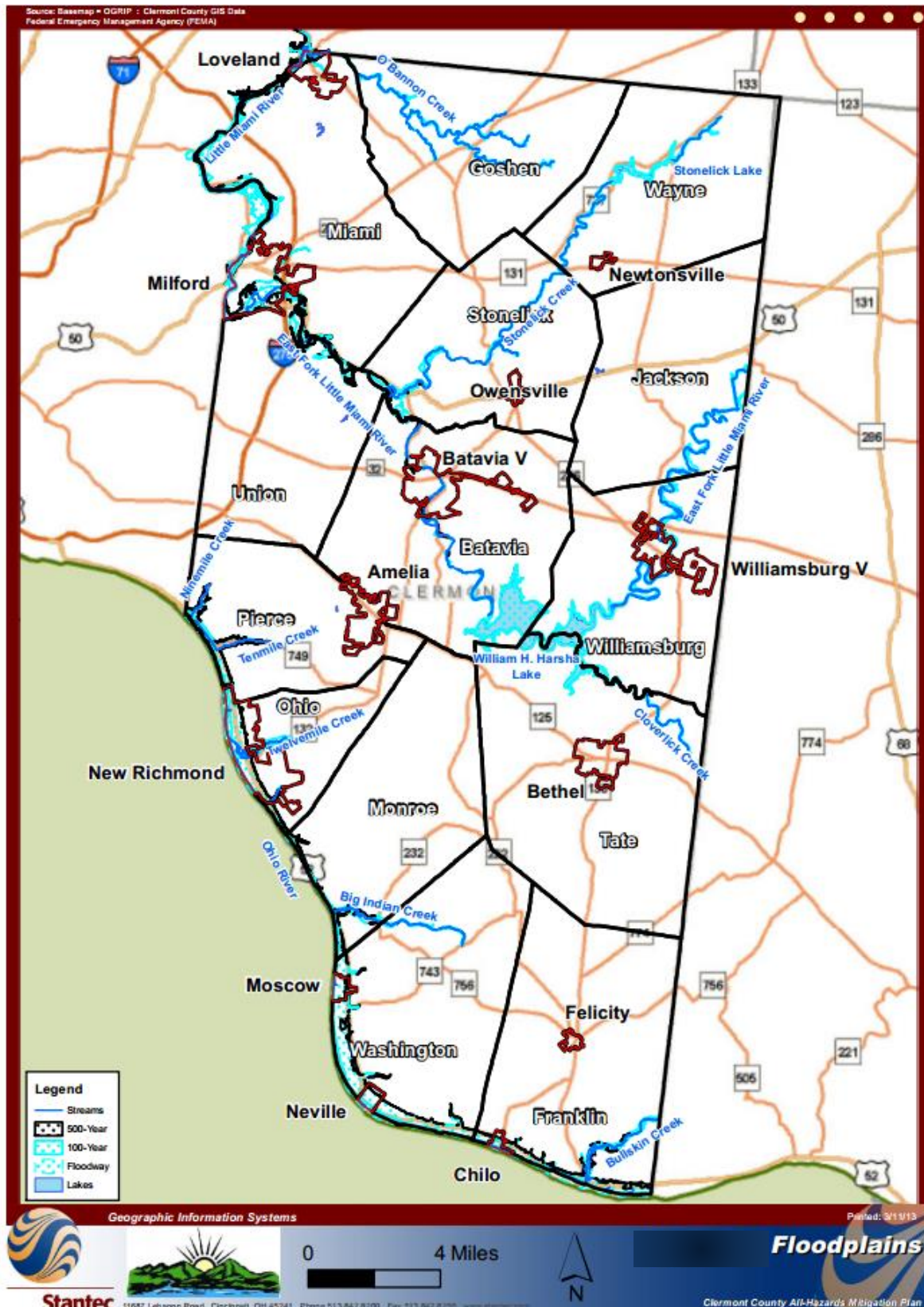
A. Agreements and Understandings

- The local Fire/EMS Departments and local Law Enforcement Agencies have a Countywide Mutual Aid Agreement to assist neighboring jurisdictions.
- EMA has a Mutual Aid Agreement with the New Richmond Exempted Village School District for a back-up EOC location at the New Richmond District Office located at: 1135 Bethel-New Richmond Rd. In the event of an Ohio River Flood, this facility may be used for an ICP/ACP, Multi-Agency Coordination Center or County EOC.
- The Intra-State Mutual Aid Agreement (IMAC) (Ohio Revised Code, Title LV, Chapter 5502, and Section 5502.41) has been put in place to supplement response efforts. IMAC is mutual aid agreement through which all political subdivisions can request and receive assistance from any other political subdivisions in the state; resolving many of the administrative and legal issues in advance of an incident.

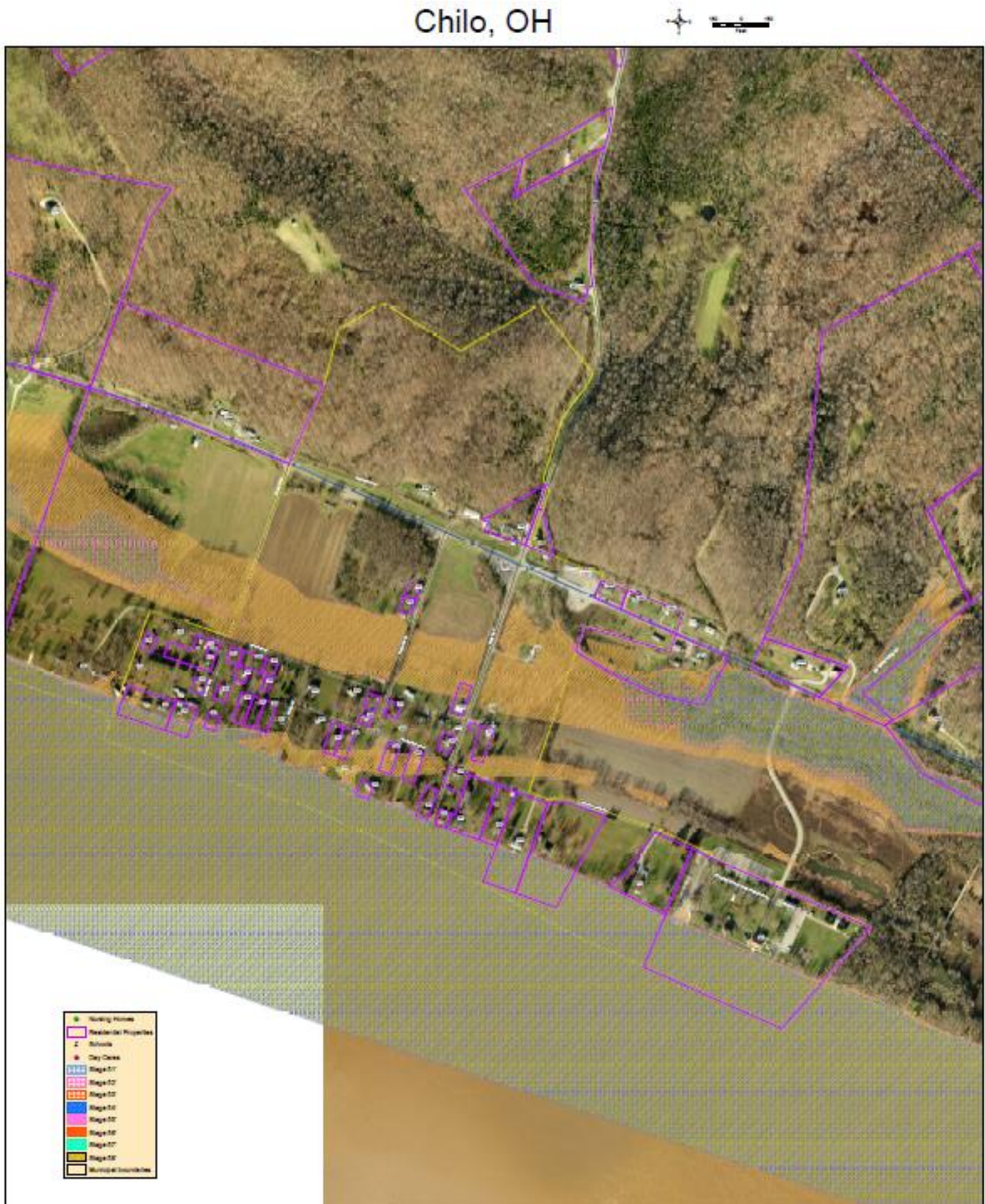
V. Plan Development and Maintenance

This plan serves to supplement, not substitute, the County's Basic EOP. If a significant event occurs, a plan review and update process will be initiated by the County EMA.

Tab A: Maps of Flood Prone Areas

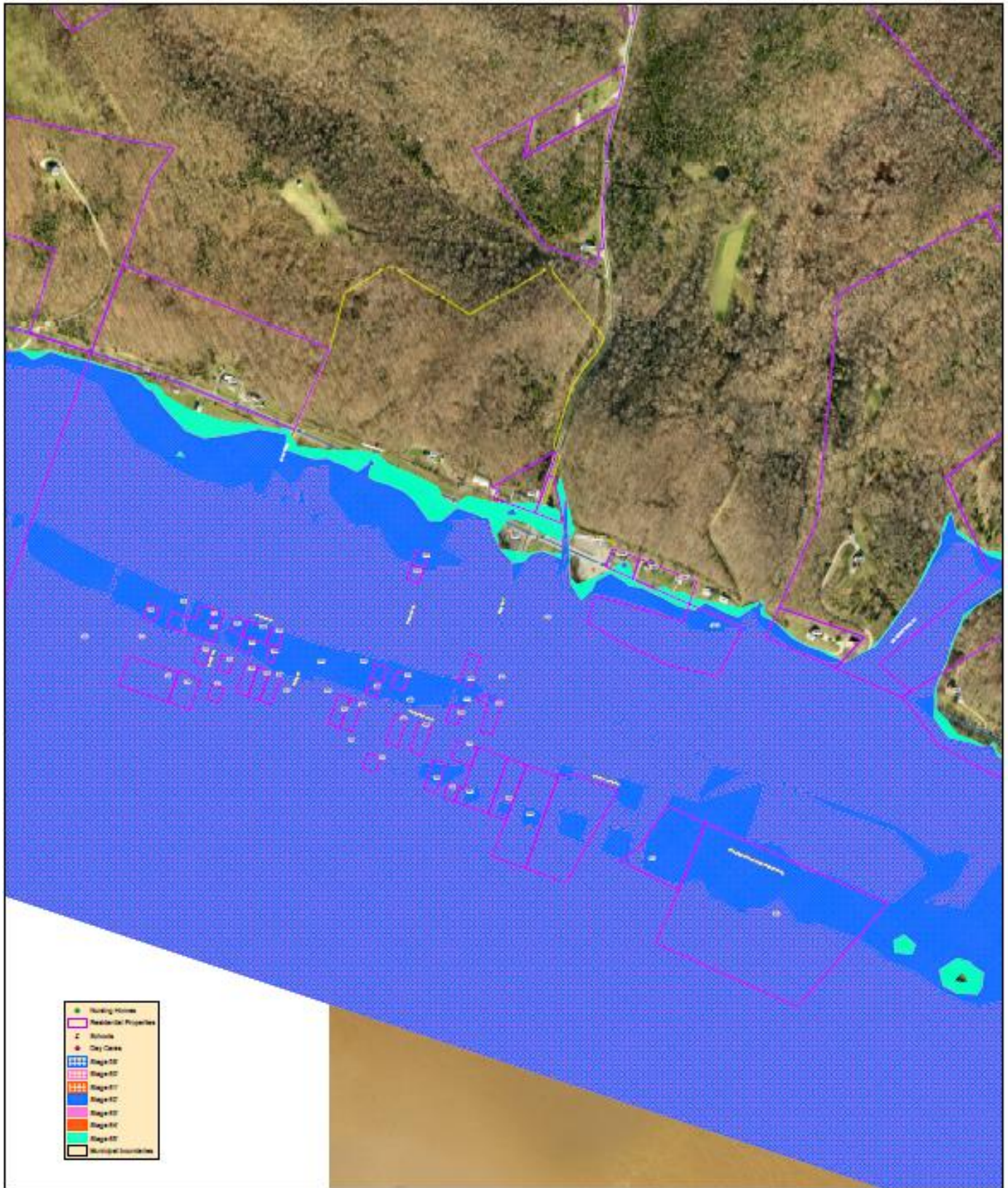


Village of Chilo Flood Impacts - 55 ft. to 59 ft.



Village of Chilo Flood Impacts – 60 ft. to 65 ft.

Chilo, OH



Village of Neville Flood Impacts – 55 ft. to 59 ft.

Neville, OH



Village of Neville Flood Impacts – 60 ft. to 65 ft.

Neville, OH

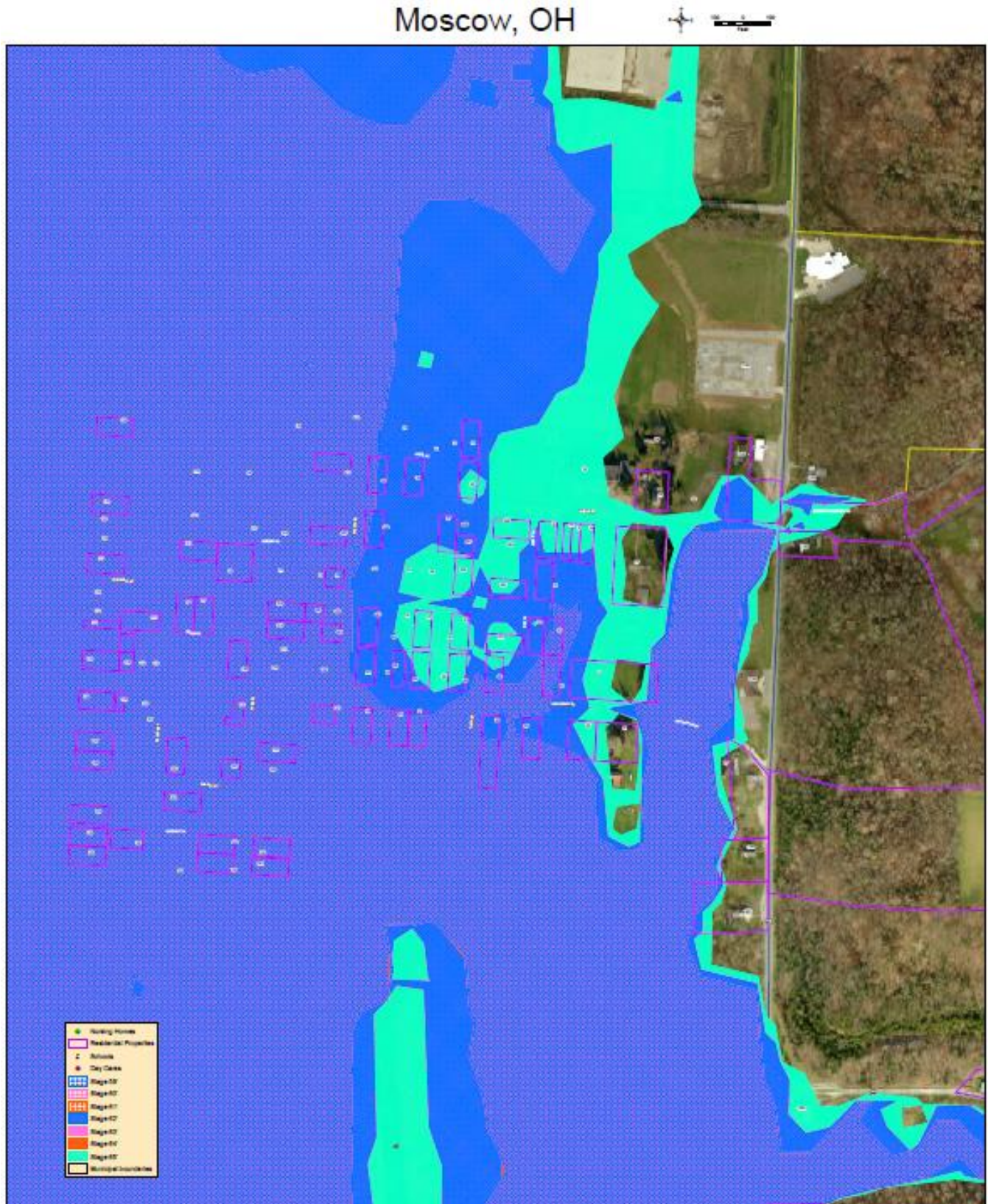


Village of Moscow Flood Impacts – 55 ft. to 59 ft.

Moscow, OH

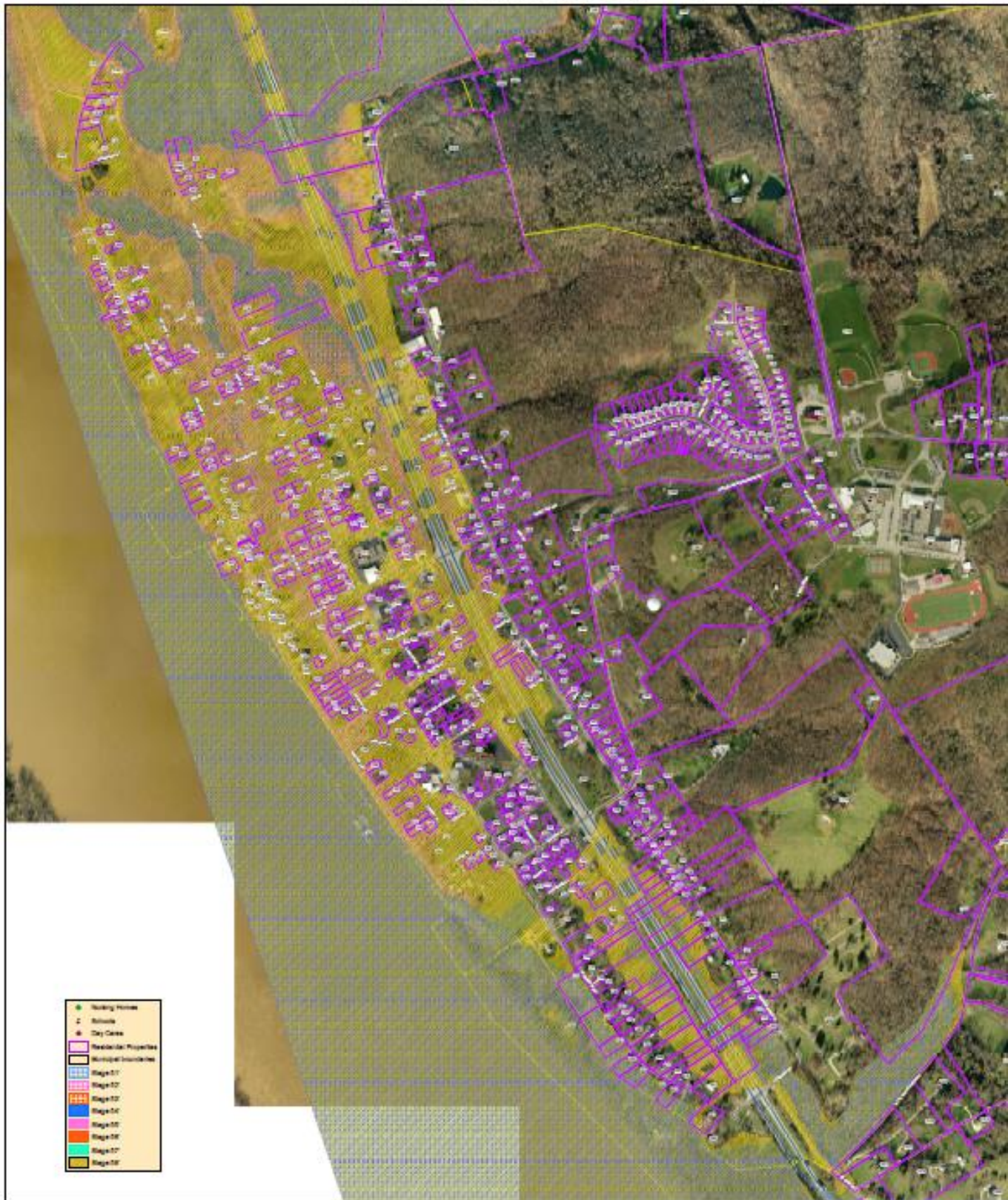


Village of Moscow Flood Impacts – 60 ft. to 65 ft.



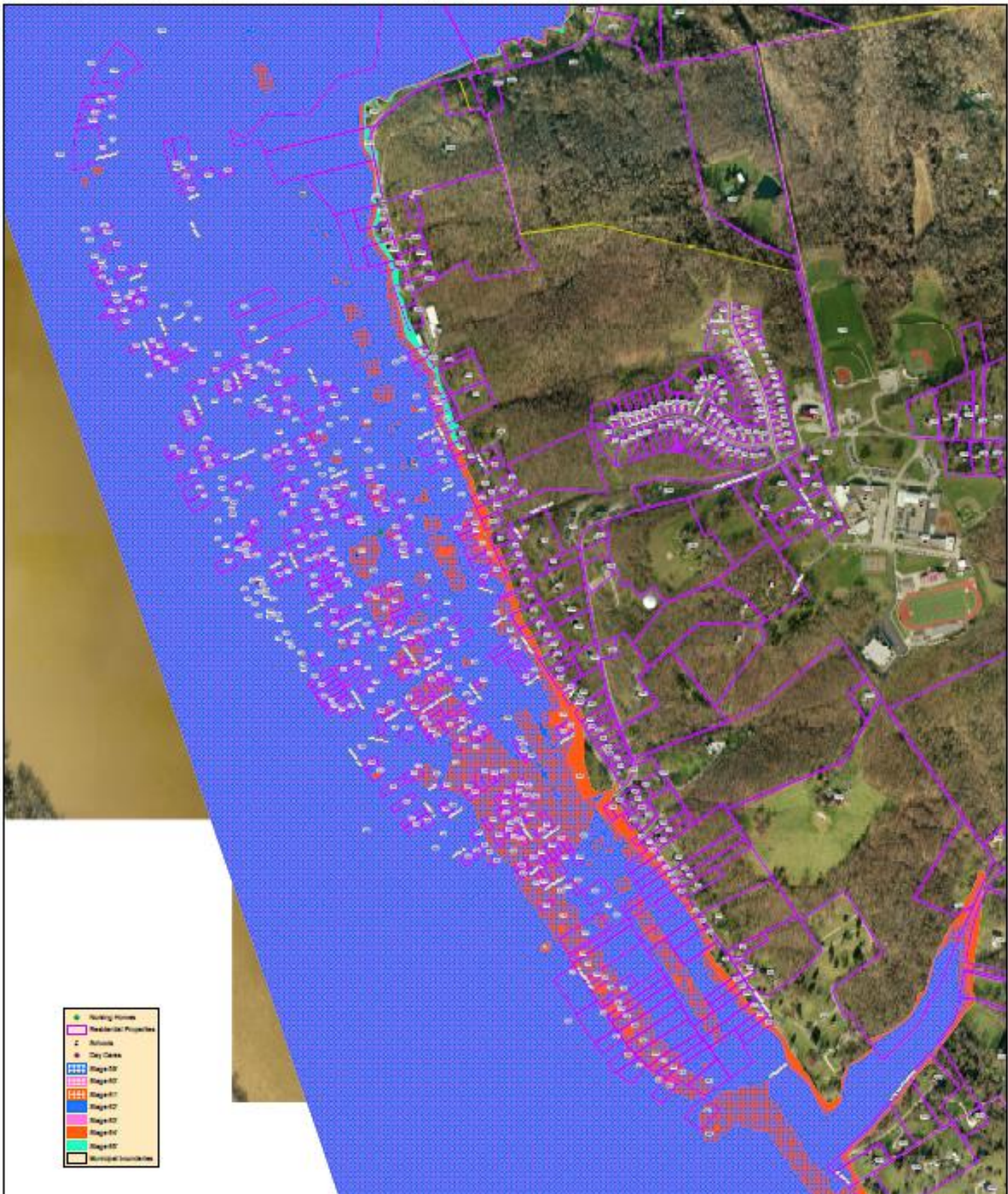
Village of New Richmond Flood Impacts – 55 ft. to 59 ft.

New Richmond, OH



Village of New Richmond Flood Impacts – 60 ft. to 65 ft.

New Richmond, OH



Tab B. Historical Road Closures and Property Impacts

Historical Road Closures

54 Feet				
Pierce Twp.	Ohio Twp.	Monroe Twp.	Washington Twp.	Franklin Twp.
<ul style="list-style-type: none"> - Steamboat Drive (45.5') - Old US 52 @ Nine Mile (Arnold's Marathon) (50') - 468 Old US 52 @ bridge (no access to house) (50') - Old Kellogg @ 8 Mile (51') - Old US 52 – ½ mile east of Nine Mile to SR 749 *residents can still access driveways* (52') - 574 Old US 52 @ bridge (52.5') - Locust Corner @ bridge (54') 	<ul style="list-style-type: none"> - US 52 near Frank Willis (54.9 ft.) 	<ul style="list-style-type: none"> - Dry Run Road @ SR 232 (52.5 ft.) - Indian Road @ US 52 (52.5 ft.) - US 52 @ Pt. Pleasant Bridge - SR 232 - US 52 to SR 756 - SR 232, just N of US 52 - Clermontville Spur Rd. 	<ul style="list-style-type: none"> - Neville Spur Rd. (50 ft.) 	<ul style="list-style-type: none"> - Chilo Lock 34 Park @ US 52
Villages	New Richmond		Moscow & Neville	Chilo
			Walnut St @ Forest St. – Neville (52.5 ft.)	

55 Feet				
Pierce Twp.	Ohio Twp.	Monroe Twp.	Washington Twp.	Franklin Twp.
<ul style="list-style-type: none"> - Nine Mile @ Locust Corner (55.1') - Old US 52 @ Pond Run Rd (55.1') 	<ul style="list-style-type: none"> - Fagins Run near SR 132 (56 ft.) 	<ul style="list-style-type: none"> - US 52 @ Clermontville-Laurel 		<ul style="list-style-type: none"> - Felicity Cedron Rural - ½ Mile from SR 133 - Felicity Cedron Rural @ 0.9 MM
Villages	New Richmond		Moscow & Neville	Chilo

56 Feet				
Pierce Twp.	Ohio Twp.	Monroe Twp.	Washington Twp.	Franklin Twp.
<ul style="list-style-type: none"> - Palestine – west end (56.5 ft.) 		<ul style="list-style-type: none"> - US 52 @ SR 232 	<ul style="list-style-type: none"> - 2417 Swings Corner-Pt. Isobel Rd. 	<ul style="list-style-type: none"> - US 52 @ SR 133 - SR 133 @ Felicity Cedron Rural
Villages	New Richmond		Moscow & Neville	Chilo
	<ul style="list-style-type: none"> - Susanna Way - Sophia St. - Plenty St. - Western St. 			

57 Feet				
Pierce Twp.	Ohio Twp.	Monroe Twp.	Washington Twp.	Franklin Twp.
- Old US 52 - Nine Mile to SR749 - Palestine @ T (57.2 ft.) - passable 2 in. on rd.			US 52 @ Laurel Moscow	
Villages	New Richmond		Moscow & Neville	Chilo
	Quarry St. Willow St. Market - Union to Race			

58 Feet				
Pierce Twp.	Ohio Twp.	Monroe Twp.	Washington Twp.	Franklin Twp.
Old Kellogg – Nine Mile to Eight Mile	2510 SR 132 (58.25')			
Villages	New Richmond		Moscow & Neville	Chilo
			Wells St @ Second St. (Moscow) Walnut @ Forest St. (Neville)	

Historical Property Impact

57.32 Feet				
Pierce Twp.	Ohio Twp.	Monroe Twp.	Washington Twp.	Franklin Twp.
		1602 Locust St. (crawl space) 1606 Locust St. (elevated) 1571 US 52 (elevated) ODOT Rest Stop @ Pt. Pleasant		
Villages	New Richmond		Moscow & Neville	Chilo
	1030 Front St. (59.6 ft.) 1015 Cobra (57.1 ft.) 700 Willow (57.2 ft.) 198 Race (57.6 ft.) 202 Main (57.6 ft.) 411 Willow (no structure) – (57.8 ft.)			

57.72 Feet				
Pierce Twp.	Ohio Twp.	Monroe Twp.	Washington Twp.	Franklin Twp.
Palestine Rd. (1 home) 653 Old US 52				
Villages	New Richmond		Moscow & Neville	Chilo
	712 Willow St. 208 Susanna Way 743 Washington St. 781 Washington St. 805 Washington St. 622 Willow St. 624 Willow St. 630 Willow St. 709 Willow St. 711 Willow St.			