



# Clermont County On The Move

*a newsletter for citizens*

April 2006

Commissioners: Mary Walker, Bob Proud, and Scott Crowell

## *Are You Storm Ready?*

Clermont County is one of eight StormReady communities in Ohio, certified by the National Weather Service and the Emergency Management Agency, because of efforts made to plan for and educate citizens and emergency responders about weather safety.

Every year, Americans are hit with over 10,000 thunderstorms, 2,500 floods, 1,000 tornadoes, and six deadly hurricanes. Last year in Ohio, severe weather caused nearly \$8 million in damages and resulted in a presidential disaster declaration.

“While Mother Nature is unpredictable, we can do a number of things to ensure that our families are well prepared if a tornado or other dangerous weather situation arises,” says Clermont County Emergency Management Agency Director Beth Nevel. “Take responsibility for your safety and meet with

household members to develop a disaster plan. When a tornado watch is issued, review your plan. Don’t wait for the watch to become a warning. Know where the safest part of your home is, or where to seek shelter nearby.”

Generally, the safest place to go during a tornado is a basement. If the building has no basement, go to a small interior room on the lowest level of the structure with no windows.



If you’re outside when a tornado strikes, immediately go to the lowest level of a nearby sturdy building. Winds from tornadoes can blow large objects, including cars, hundreds of feet away. If no building is nearby, lie flat in a low spot. Use your arms and hands to protect your head.

Numerous severe weather events took place across Ohio last year. On April 22, 2005, Delhi had hail measuring 1.75 inches! On August 30, a tornado struck near Morrow, as remnants of Hurricane Katrina moved across the Ohio Valley. A total of four tornadoes moved through Ohio last year, according to the National Weather Service; peak tornado season is from April through July.

To be certified as StormReady, a community must establish a 24-hour warning point and emergency operations center, have multiple ways to receive severe weather forecasts and warnings to alert the public, create a system



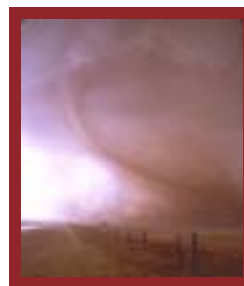
that monitors local weather conditions, promote the importance of public readiness through community seminars, and develop a formal hazardous weather plan that includes training for severe weather spotters and emergency exercises.

A regional approach is now in effect concerning the activation of the outdoor warning sirens. All tri-state counties now test the sirens at noon on the first Wednesday of each month.

The Clermont County LEPC voted on March 9, 2006 to approve the activation of the outdoor warning sirens when there is a severe thunderstorm

warning with a tornado watch or another weather situation that threatens the safety of citizens.

When the sirens sound, citizens are encouraged to tune to broadcast outlets or NOAA all hazard weather radio to learn what steps need to be taken to ensure their safety.



# Preparing for Pandemic Flu

By: Julianne Nesbit and Marty Lambert, General Health District

Pandemic influenza planning is underway at the Clermont County General Health District. Experts at the World Health Organization and the Centers for Disease Control and Prevention indicate that it's not a matter of if a pandemic will occur but only when the next pandemic will occur. While there's no evidence that the Avian flu (bird flu) you're hearing so much about in the news will actually be the strain that causes a pandemic, there are many similarities between this strain of flu and the strain that killed millions of people worldwide during the 1918 flu pandemic.

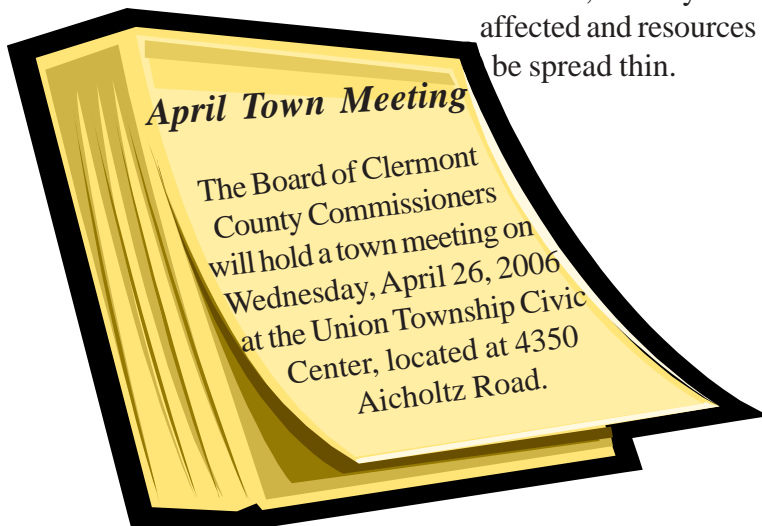
Bird flu is expected to enter the United States in the next few months, and while the only current way to get it, is through handling infected birds, there is the possibility it

will mutate and human-to-human spread may begin. In this event, a pandemic, or worldwide spread of disease, is a very real possibility. Unfortunately, there will be no flu vaccine available at the beginning of a pandemic and with present technology it will take at least six months after identifying the mutated strain to develop a vaccine for widespread use.



Pandemic flu will be significantly different from seasonal flu because the human population will not have immunity to the new or reemerging strain. Pandemic flu will affect a large number of the population and will cause day to day life to change. Businesses may not be able to function normally, or at all, schools may close and 30 to 40 percent absenteeism rates are expected. Social gatherings may be canceled and limitations on travel may be put in place. Federal and state aid cannot be counted on, as everyone will be affected and resources will be spread thin.

The Clermont County General Health District is encouraging everyone to "Get Informed. Be Prepared." Look for information over the next few months about what to expect and what you need to know and do to prepare. In the meantime, please visit [www.clermonthelthdistrict.org](http://www.clermonthelthdistrict.org) and [www.pandemicflu.gov](http://www.pandemicflu.gov) for information and guidance on preparedness, or contact the Clermont General Health District at (513) 732-7499.



## April Commissioner Sessions

Tuesday, April 4	1 p.m.
Wednesday, April 5	1 p.m.
Tuesday, April 11	1 p.m.
Wednesday, April 12	1 p.m.
Tuesday, April 18	1 p.m.
Wednesday, April 19	1 p.m.
Tuesday, April 25	1 p.m.
Wednesday, April 26	1 p.m.

*All regular sessions are held in the third floor session room of the Clermont County Administration Building, 101 East Main Street in Batavia, Ohio. For agenda information, contact the BCC offices at (513) 732-7300.*

## New Voting Machines Debut

When Clermont County citizens head to the polls on Tuesday, May 2, 2006, they'll have an opportunity to use new vote counting machines, designed to make voting more accurate. Precinct optical scan machines have been purchased and

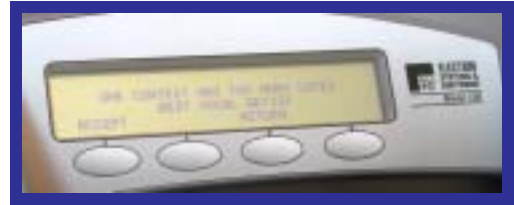


*Mike Hackett with Election Systems and Software demonstrates new Clermont voting machines*

will be available at the County's 70 polling locations.

"The ballots will be similar to those used in the past and voters will find the new voting machines extremely easy to use," said Clermont Board of Elections Director Mike Keeley. "These machines offer a second chance for citizens if they fill out their original ballot incorrectly. A screen on the machine will alert you about voting for too many candidates. They will also be warned if the scanner detects no votes on a ballot. This may occur if the voter does not fill in the vote selection oval properly." The earlier system invalidated a ballot if wrong choices were made.

In the past, when you cast your ballot at the polls, that ballot was then shipped to the Board of Elections,



where it was passed through a machine for a count. The new machines will tally the vote on the spot. After the polls have closed, a card in the machine will be removed and along with the stored ballots, will be delivered to the Board of Elections where the card will be read and results will be immediately available. Ballots could be counted as a back-up to the system.

The machinery was purchased by a grant for the Help America Vote Act.

---

### *Vote for Kids!*

By: Anne Arbaugh, Children's Protective Services

On May 2, 2006, Children's Protective Services (CPS) will have a .8 mill replacement levy on the ballot. This is not a new tax; it is a replacement of an existing tax. The money generated by this levy is used to protect Clermont County's most vulnerable citizens – abused and neglected children. All of the money from the



Children's Services levy is used to provide services for these children. It pays for services such as foster care and clothing. It also provides for counseling and medical needs of abused and neglected children who may otherwise go untreated.

The Children's Services levy is needed to provide services that are critical to abused and neglected children. State and federal funding covers only 49 percent of CPS' costs. Local funding must make up the other 51 percent of the expenses associated with protecting

abused and neglected children. If the levy does not pass in May, there will be no dedicated local funding source to pay for these mandated services. This would put a tremendous strain on the County and would result in cuts to services for abused and neglected children and in many other programs throughout Clermont County.

If you would like more information, please check our website at [www.keepclermontkidssafe.org](http://www.keepclermontkidssafe.org) or call CPS at 732-7173.

## April is Child Abuse Prevention Month

By: Anne Arbaugh, Children's Protective Services

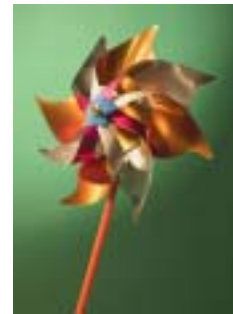


April is a time to focus on the protection of our most dependent, trusting and vulnerable citizens—our children. Child Abuse Prevention Month has been observed every April since its presidential proclamation in 1983 to join individuals and organizations together in raising public awareness of child abuse and its prevention.

The prevalence of child abuse in the nation, the state and the county is alarming. In 2000, more than three million children were reported abused or neglected in the United States. More than 100,000 cases of child abuse and neglect were reported in Ohio during 2001. Last year, Clermont County received more than 1,400 allegations of abuse and neglect. Clermont County Children's Protective Services provided services to more than 4,500 children and their families as the result of abuse and neglect.

Clermont County Children's Protective Services (CPS) has planned several events in April to draw attention to child abuse prevention. On April 4, 2006, the Board of County Commissioners will declare April as Child Abuse Prevention month in Clermont County. A child who received services from CPS will speak about her experience.

CPS will be coordinating "Pinwheels for Prevention." Pinwheels will be placed in front of Municipal Court to symbolize each report of child abuse and neglect that was received in 2005. There will be more than 1,400 pinwheels placed at that location, 4430 State Route 222, in Batavia. In addition, several schools will place pinwheels in the front of their buildings to represent the reports of abuse and neglect in that area. The schools participating in this event are Clough Pike Elementary, CNE Elementary, Monroe Elementary, New Richmond Elementary, Amelia Elementary, Felicity Elementary, Holly Hill, and Mulberry Elementary.



Finally, there will be a walk at Miami Meadows Park on April 29, 2006 to draw attention to preventing child abuse and neglect. The walk will begin at 10:00 with refreshments following at 11:30. Adults can register for \$10 per person and children walk free! Please contact CPS at 732-7173 for more information.



Originally, Easter eggs were painted with bright colors to represent the sunlight of spring and were used in Easter-egg rolling contests or given as gifts

*Information courtesy of [www.holidays.net](http://www.holidays.net)*



### *Fish Stocked at Stonelick*



On March 23, the banks of the lake at Stonelick Park were lined with fishermen. These men, armed with a variety of creepy crawlers waited with baited breath (and poles) for the London Hatchery truck to arrive. The Ohio Department of Natural Resources (ODNR) Division of Wildlife released about 3,000 rainbow trout into the Stonelick Lake in Clermont County. Overall, more than 80,000 of these fish are released into 45 Ohio lakes and ponds from March through May. In the fall, another round of “trout stocking” will happen again.

These trout are 10 to 13 inches long and are ready to catch, clean, and eat. “Fishing is a family activity that brings many Ohioans hours of enjoyment,” said Jim Stafford, fish hatchery

administrator for the ODNR Division of Wildlife.

For information about obtaining a fishing license call 1-800-WILDLIFE.



Someone at the Clermont County Administration Building tried to find some humor in Mother Nature’s recent spring gift to us, snow!

By the way, the latest date for a measurable snowfall in Greater Cincinnati, according to the National Weather Service, is May 6. It has happened twice before on that date, in 1898 and in 1989.

## **Tax Offset Season Underway for Clermont County Child Support**

By: Annette Black, Child Support Enforcement

Under the tax refund offset process, support arrears that do not include fees, court costs, or any non support debts are satisfied through the offsetting of federal and state income tax refunds payable to those owing past-due support. In accordance with the Ohio Administrative Code, state and federal laws and regulations, all past-due support meeting certain criteria shall be submitted for collection through the federal income tax refund process on a weekly basis and the state income tax refund process on an annual basis. Spousal support only cases are not eligible for this collection method.

Current spouses filing a joint return should file an Injured Spouse Claim with the IRS at the time of the filing of their tax return, if they do not wish to have their portion of the tax refund intercepted and applied to the non-custodial parent’s past due support balances.

All joint returns intercepted are held for six months prior to being applied to the non-custodial parent’s arrearage. If the current spouse wishes for their portion of the tax refund to be applied to the non-custodial parent’s past due support and not be held for six months, they must contact the Clermont County Child Support Office to obtain an Injured Spouse Affidavit to be signed

by the current spouse and notarized, to have those funds released to the case.



Non-custodial parents who wish to have any excess amount collected through the offset program applied to any remaining balances must contact the Clermont County Child Support Office to obtain a Balance and Administrative Fee Affidavit to be signed by the non-custodial parent and notarized.

**Payors:** If you owe back child support DO NOT file Rapid Refund. If you are not sure if your case has been submitted for the Tax Offset Program, contact your CSE caseworker.

## New Union Township Facility Houses Water Tank and Fire House

By: Tom Yeager, Water and Sewer Dept.

The Board of County Commissioners, the Clermont County Sewer District and Union Township Trustees began a joint collaborative effort during the summer of 1998 concerning the possibility of locating a fire house adjacent to, or within the base, of an elevated water tank to be located within Union Township.

Studies were completed and a public involvement meeting was held in the fall of 2002, leading to a determination that the facilities would be located at the northwest corner of Glen Este-Withamsville and Clough Pike. After the planning, funding, and feasibility stages were completed, the Board of

County Commissioners and Union Township Trustees agreed to locate the fire house within the base of the elevated

tank, which would permit both agencies to utilize this facility.

Bids were received to construct the tank in January 2004, and the fire house within the tank, in June 2005. Construction began in July 2004. Clermont County began utilizing the two million gallon tank in March 2006; plans call for the fire house to be operational in May of this year.



### ***History comes alive!***

*The annual Grassy Run Rendezvous will be held April 28-30 at Williamsburg Community Park. For more information, visit [www.grassyrun.org](http://www.grassyrun.org).*

### **National Library Week April 2-8**

The Clermont County Law Library Association will be sponsoring games, food, and prizes, Monday through Thursday. Visit the Law Library, in the Clermont Common Pleas Courthouse, 270 Main Street, in Batavia.

the display, contact Sue Grant with the Art Guild at 732-2537.



***Members of the Clermont Art Guild pose with the Goddess of Justice artwork at Clermont Municipal Court***

## Municipal Court Art

On Monday, March 13, 2006, Municipal Court Judge Thomas Herman unveiled a portrait entitled *Goddess of Justice*, a donation from the Clermont Art Guild. The picture is one of several pieces of artwork that are on display in the hallways of the Clermont Municipal Court building.

“I am very pleased and grateful that the Clermont Art Guild is collaborating with the court for this public art display,” said Judge Herman. “It will help lift

the spirits and brighten the day of all those who pass by them.”

“The *Goddess of Justice* is a 4’X 7’ painting that features the blindfolded justice symbolizing the court as a fair and impartial system,” said Clermont Art Guild President Karen Trautmann. “There are over 40 paintings currently on display, and we plan to switch them out with new images periodically.”

Any Clermont County resident can submit artwork for consideration to hang at the Municipal Courthouse; to submit artwork for possible inclusion in



## *Effective Leadership in a Changing World*

### *Zimpher and Munoz Keynote Speakers*

By: Chris Mehlman, Auditor's Office

The Clermont 20/20 LEAD Clermont Class of 2006 will hold its sixth annual leadership day on Wednesday, May 10, at the Oasis Golf Club and Conference Center, located at 902 Loveland-Miamiville Road, from 8 a.m. until 2 p.m. The theme of this year's event is "Effective Leadership in a Changing World."

Keynote speakers for the seminar are Nancy Zimpher, President of the University of Cincinnati, and Anthony Munoz, Cincinnati Bengal's Hall of Famer. They will headline an impressive cast of speakers discussing leadership in the areas of health and wellness, education, volunteerism, public safety, security and technology.

Attendees will acquire a better understanding of the need to recognize, adapt, and embrace change, and the results of failing to acknowledge change through effective leadership. The speakers will discuss real-life experi-

ences and provide practical guidance on how to successfully manage change.



The leadership day seminar is open to the public. The cost is \$75 per person (group discounts are available), which includes a continental breakfast, catered lunch, and all presentations. Anyone interested in attending can contact Clermont 20/20 at (513) 753-9222, or register online at [www.clermont2020.org](http://www.clermont2020.org).

### **Seeing Green for FAAN**

By: Carrie Davin, Auditor's Office



On Saint Patrick's Day, Friday, March 17, 2006, Clermont County Auditor's Office employees were seeing a sea of green! Many wore green to support food allergy awareness, and to raise money for The Food Allergy and Anaphylaxis Network (FAAN). FAAN is a national nonprofit organization established to increase public awareness about food allergies and anaphylaxis (a severe, life-threatening reaction), to provide

education, and to advance research on behalf of all those affected by food allergies.

Food allergies affect 11 million Americans, including 3 million under the age of 18. They account for 150 to 200 deaths and an estimated 30,000 visits to the emergency room each year.

The Employee Action Committee chose FAAN because an employee's son has a peanut allergy and there was a strong desire to raise awareness about food allergies. If you would like to learn more about food allergies, please visit The Food Allergy & Anaphylaxis Network at [www.foodallergy.org](http://www.foodallergy.org).



*Clermont County Auditor Linda Fraley and staff enjoy the wearin' of the green!*



## CASA Spring Benefit for Kids "Off to the Races"

By: Jenifer Fox-Gerrits, CASA

The annual CASA for Clermont Kids! spring benefit to help abused and neglected children in Clermont County will be held on Friday, June 2, from 7 p.m. until 11 p.m. at the Receptions East, located at 4450 Eastgate Boulevard in Cincinnati. The benefit will have a derby theme



The event features dinner, live entertainment (provided by Fathead Davis and the Good Fellas), a basket raffle, and a grand raffle.

For the first time, reserve seating will be available for groups of 10 or more. Tickets for the derby themed event are available until Friday, May 19, by calling CASA for Clermont Kids! At (513) 735-SAFE.



## Park Events

By: Keith Robinson, Park District

### Easter Egg Hunt

Saturday April 8, 10:00 a.m.

#### Sycamore Park

Children 10 and under (with an adult) are invited to the annual Easter Egg Hunt at Sycamore Park. Kids bring their own Easter basket as they search for eggs. Sponsored by the Batavia Rotary Club.

### Sycamore Park Trail Dedication

Saturday April 8, 10:45 a.m.

#### Sycamore Park

After the Easter Egg Hunt, help celebrate the opening of the Park District's newest addition, the Sycamore Park hiking trail. The trail is on 30 acres of land adjacent to the existing Sycamore Park.

### Springtime Herb Day

Presented by the Log Cabin Herb Society

Saturday April 29, 9:30 a.m. - 4:00 p.m.

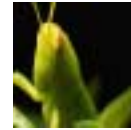
#### Pattison Park Lodge

Enjoy a fun-filled day of education and enjoyment centered around you, herbs, and your garden. Lunch is included. Special guest speakers include: **Denny McKeown** (a well-known garden expert, author, and owner of Denny's Bloomin' Gardens), **Rita Heikenfeld** (author and Certified Cooking Professional with many televised cooking classes to her credit), **Laura Deeter, Ph.D.** (Ohio State Agricultural Technical Institute), and **Susan Parker** (an expert in herbal medicinal remedies and owner of Susan's Natural World). Space is limited, call 732-0929.



## Amazing Weather Facts

Tree crickets are called the poor man's thermometer, because temperature directly impacts their rate of activity. Listen for a cricket and count the number of chirps it makes in 15 seconds. Add 37, and the sum will equal the Fahrenheit temperature!



## Where did the Easter Bunny come from?

The Easter bunny was introduced to American folklore by the German settlers who arrived in the Pennsylvania Dutch country during the 1700's. The arrival of the "Oschter Haws" was considered "childhood's greatest pleasure" next to a visit from Christ-Kindel on Christmas Eve. The children believed that if they were good the "Oschter Haws" would lay a nest of colored eggs.



The children would build their nest in a secluded place in the home, the barn, or the garden. Boys would use their caps and girls their bonnets to make the nests. The use of elaborate Easter baskets would come later as the tradition of the Easter bunny spread throughout the country.

Information courtesy of  
[www.yahoo.com](http://www.yahoo.com)

---

## April 9 is Yellow Ribbon Day



The Board of Clermont County Commissioners has proclaimed Sunday, April 9, 2006 as “Yellow Ribbon Day in Clermont County.” On that day, two years ago, Clermont County resident Matt Maupin was taken hostage by insurgents while serving his country in Iraq.

The proclamation also notes the supreme sacrifices made by local servicemen Chuck Kiser and Nick Erdy, both killed in the line of duty in Iraq.

*Pictured above: Clermont Commissioners Proud and Walker with members of the Chuck Kiser family and Keith Maupin, father of Matt Maupin.*

## National Crime Victims’ Rights Week

By: Susan King, Victim Advocate

The week of April 23, 2006 is National Crime Victims’ Rights Week. During this time, crime victims, survivors, and those who serve them will join together across America to promote victims’ rights and services, and to educate our communities about the devastating impact of crime on all of us. The theme of 2006 National Crime Victims’ Rights Week is “Victims’ Rights: Strength in Unity.” The observance also recognizes the ongoing efforts of victim service providers, justice professionals, allied professionals, and volunteers who dedicate their lives to helping victims of crime.

There are many programs in our community that provide victims with crisis intervention, counseling, support, safety planning, and advocacy throughout the criminal justice process. Many of these organizations work together in a collaborative basis and have formed a task force – the Clermont County Family Violence and Sexual Assault Task Force.

The Clermont County Prosecuting Attorney’s Office, headed by Prosecutor Donald W. White, has a Victim Assistance division, whose function is to provide advocacy service to victims of crime in both the felony and Municipal court systems in Clermont County. Services include explanation of the criminal justice system to victims,

notification of court hearings and case status, and in some cases, accompanying victims to court.

Statistics provided by the U.S. Department of Justice, indicate that 8 out of 12 Americans will become victims of a crime at least once in their lifetime. It is very likely that, at some point, someone you love will tell you that he or she has been assaulted, raped, robbed, or victimized by some type of violent crime. If you or someone you know is a victim of crime, please call the Victim Assistance Office at 732-7979. To learn more about crime victims’ rights and services, visit the Office for Victims of Crime Web site at [www.crimevictims.gov](http://www.crimevictims.gov).

### *Congratulations!*

Clermont Veterans’ Commission Board member Howard Daugherty will be inducted into the *Ohio Military Hall of Fame* on Friday, May 5, 2006, during ceremonies at Veterans Plaza in Columbus.



Daugherty is being honored for his service to our country and for going above and beyond the call of duty while serving in Vietnam.

“I am honored to have been selected for this honor,” said Daugherty. “I am proud to have served my country and I salute all of our service personnel who have or are currently serving this great country.”

### *Has the library changed your life?*

By: Sandy Prell, Clermont Library

This spring, the Clermont County Public Library, the American Library Association and *Woman’s Day* magazine want to know how the library has changed the lives of the people in our community. Until May 10, you are invited to send your library stories to [womansday@ala.org](mailto:womansday@ala.org). Four of the stories will be featured in an upcoming issue of the magazine; the story must be 700 words or less.



# April Events

By: Tammy Craig, Clermont Library

### One on One Internet Training

Weekdays in April  
Amelia Branch

*Training sessions can be scheduled to learn the basics of using the Internet and setting up an email account. Call 742-5580*



### Meet Steve Newman: Worldwalker

Monday, April 3 – 7 p.m.  
Bethel Branch

*Teens and adults are invited to meet author and traveler Steven Newman, as he shares his experiences traveling throughout the world. Call 734-2619*

### Take the Library Trivia Challenge

April  
New Richmond Branch

*See how well you know your library by completing the trivia challenge! For more information, call the library at 553-0570.*

### Scrapbooking

April 4, 7 p.m.  
Owensville branch

*Teens and adults can join Stacey Goslin as she shows us how to organize our pictures and create a memory card. Materials and supplies will cost \$1.75 per person and will be collected at the beginning of the program. To register, call 732-6084.*

### Plant Exchange

May  
Williamsburg Branch

*Bring in a labeled plant or cutting in a pot, container, or box for exchange. For more information, call the library at 724-1070.*



### Learn to Knit

April 4 and May 2, 7:00 p.m.  
Williamsburg Branch

*Bring your needles and yarn to make a handbag. For more information call 724-1070.*

### Drop-In Storytime sessions

Tuesdays in April, 10 a.m.  
Williamsburg Branch

*Children up to 5 years will listen to stories, sing songs, and play games. Parents do not have to register in advance to bring their child. For more information call the library at 724-1070.*

### Amazing Weather Facts

How far away is lightning? During a storm, count the number of seconds between the strikes of lightning and the sound of thunder, and then divide by two. The answer will tell you how many miles away the lightning is!

**Find a new  
"best friend"**



*Maria*



*Tuptim*



*Molly*



*Puff*

**Clermont  
Animal  
Shelter**

**732-8854**

*On the Move is a service of the Board of Clermont County Commissioners. For more information about any of the articles included in this publication, contact Kathy Lehr or Beth Rawdon at 732-7597.*